
Installing Attendant Solutions™

Prerequisites

Log on as "Administrator" before running the workstation install.

Go to BTi's website at <http://www.bti.tv> and under the heading "Solutions" > "Downloads", download "Attendant Solutions Workstation v8.x". For most installations, the executable version (.exe) can be used, but a zipped version (.zip) is also provided for facilities that do not allow downloading executable files.

Note: *If this workstation is to be used for telephone communications with a Dialogic card, please contact BTi for alternate installation instructions.*

Install Process

Open the workstation installation file previously downloaded. The **Attendant Solutions Setup Wizard** will display. Click [Next].

Enter the name of the Attendant Solutions server (and a network drive letter if it was mapped) and click [Next].

If this workstation will be used to record and/or listen to School Closings voice messages, select the appropriate radio button.

NOTE: *Windows 7 and later versions require that a device be plugged into the audio jack(s) during the time of installation in order for Attendant Solutions to be set up correctly.*

After choosing the appropriate option and, if necessary, plugging in an audio device, click [Next].

For best results, accept the default folder that Setup creates for the Start Menu. Click [Next].

A desktop icon is created by default. Uncheck the box if an icon is not wanted. Click [Next].

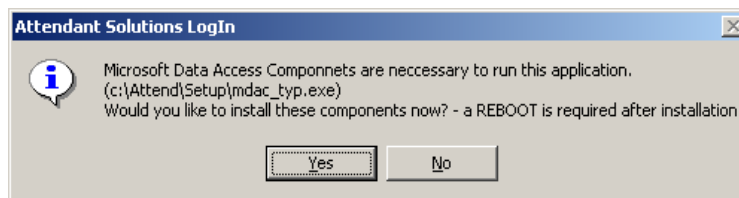
Click [Install] to begin the installation process.

The installer displays information on the files being installed and a progress bar.

Click [Finish] when the installation process completes.

After installing it on the workstation, log in to Attendant Solutions™. The default password is blank.

A prompt to install Microsoft Data Access Components will appear if the workstation does not have version 2.7 or higher.



Click [Yes] to install the components.

When the Attendant Solutions™ **Main screen** displays, the installation is complete.

For Administrators: Command Line Installation

To install Attendant Solutions silently using a command line, use the following command and parameters:

setup.exe /SP- /silent /noicons /server="servername".